

# HPLC Application

ID No.: 5378

## Proteins on Jupiter C4 250x4.6mm

**Column:** Jupiter<sup>®</sup> 5 µm C4 300 Å, LC Column 250 x 4.6 mm, Ea

**Dimensions:** 250 x 4.6 mm ID

**Order No:** 00G-4167-E0

**Elution Type:** Gradient

**Eluent A:** 0.1% TFA in water

**Eluent B:** 0.1% TFA in acetonitrile

| Gradient Profile: | Step No. | Time (min) | Pct A | Pct B |
|-------------------|----------|------------|-------|-------|
|                   | 1        | 0          | 95    | 5     |
|                   | 2        | 7          | 74    | 26    |
|                   | 3        | 10         | 66    | 34    |
|                   | 4        | 20         | 46    | 54    |

**Flow Rate:** 1 mL/min

**Col. Temp.:** ambient

**Detection:** UV-Vis Abs.-Variable Wave.(UV) @ 220 nm (ambient)

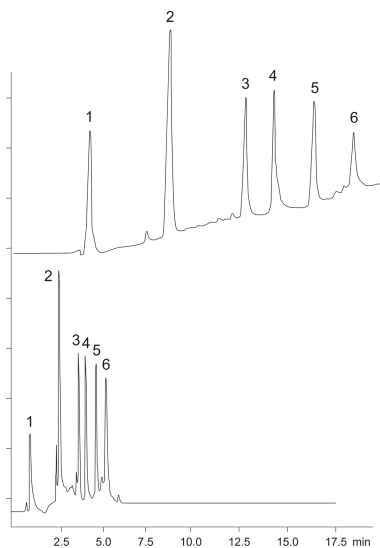
**Analyst Note:** SecurityGuard<sup>™</sup> Guard Cartridge System extends column lifetime.

- SecurityGuard Cartridges, Widepore C4 4 x 3.0mm, 10/Pk Part No.: AJ0-4330

- Holder Part No.: KJ0-4282



Products used in this application:



### ANALYTES:

- 1 Alkaline phosphatase
- 2 Cyanocobalamin
- 3 RNase
- 4 Insulin
- 5 Transferrin
- 6 Trypsin inhibitor

