

HPLC Application

ID No.: 5381

Batch 5243-6

Column: Jupiter[®] 5 μ m C4 300 Å, LC Column 250 x 4.6 mm, Ea

Dimensions: 250 x 4.6 mm ID

Order No: 00G-4167-E0

Elution Type: Gradient

Eluent A: 0.1% TFA in water

Eluent B: 0.1% TFA in acetonitrile/water (90:10)

Gradient Profile:	Step No.	Time (min)	Pct A	Pct B
	1	0	75	25
	2	15	45	55

Flow Rate: 1 mL/min

Col. Temp.: ambient

Detection: UV-Vis Abs.-Variable Wave.(UV) @ 220 nm (ambient)

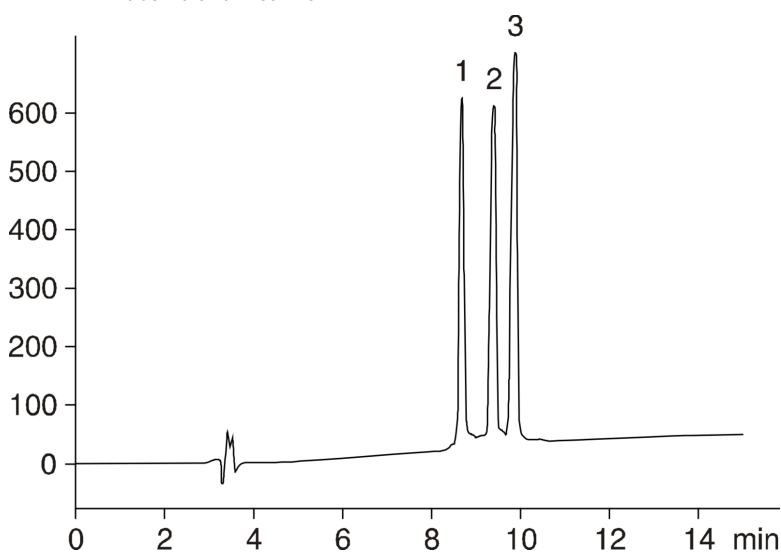
Analyst Note: SecurityGuard[™] Guard Cartridge System extends column lifetime.

- SecurityGuard Cartridges, Widedpore C4 4 x 3.0mm, 10/Pk Part No.: AJ0-4330

- Holder Part No.: KJ0-4282



Products used in this application:



ANALYTES:

- 1 Equine Cytochrome c
- 2 Bovine Cytochrome c
- 3 Canine Cytochrome c

