

# HPLC Application

ID No.: 5439

## Poly-(e-Methyl styrene) (Wide MW Range)

**Column:** Phenogel<sup>™</sup> 5  $\mu$ m 10E5A, LC Column 300 x 7.8 mm, Ea

**Dimensions:** 300 x 7.8 mm ID

**Order No:** 00H-0446-K0

**Elution Type:** Isocratic

**Eluent A:** Tetrahydrofuran

Gradient	Step No.	Time (min)	Pct A
<b>Profile:</b>	<b>1</b>	0	100

**Flow Rate:** 1 mL/min

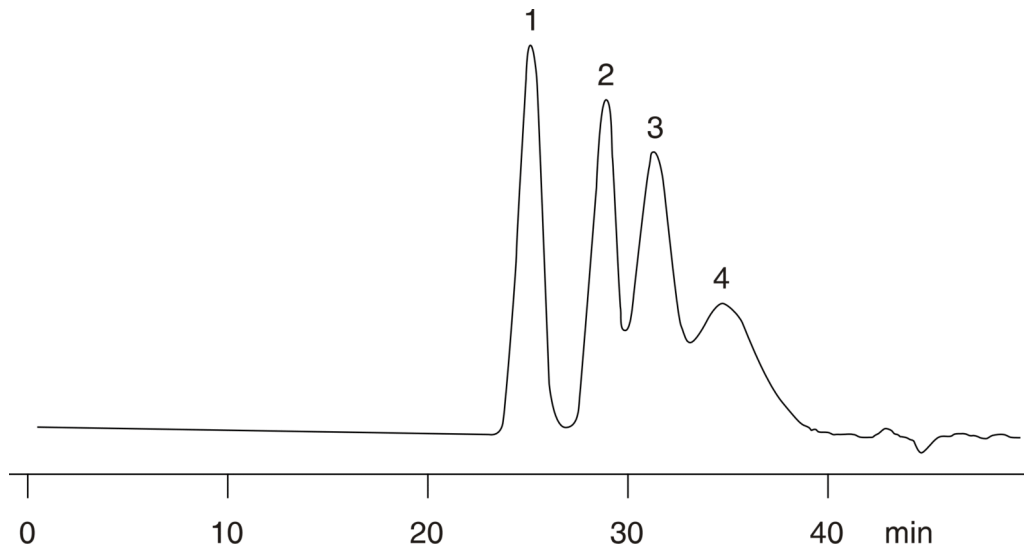
**Col. Temp.:** ambient

**Detection:** Differential refractometer @ nm (ambient)

**Analyst Note:** 4 Phenogel 5 $\mu$  columns (300 x 7.8mm ID) placed in series as follows: 10<sup>5</sup>Å, 10<sup>4</sup>Å, 10<sup>3</sup>Å, 500Å.



Products used in this application:



### ANALYTES:

- 1 680,000 MW
- 2 90,000 MW
- 3 30,000 MW
- 4 6,000 MW

