

# HPLC Application

ID No.: 5508

## Saccharides

**Column:** Rezex<sup>™</sup> RPM-Monosaccharide Pb+2 (8%), LC Column 300 x 7.8 mm, Ea

**Dimensions:** 300 x 7.8 mm ID

**Order No:** 00H-0135-K0

**Elution Type:** Isocratic

**Eluent A:** Water

Gradient Profile:	Step No.	Time (min)	Pct A
	1	0	100

**Flow Rate:** 0.6 mL/min

**Col. Temp.:** 75 °C

**Detection:** Refractive Index (RI) @ nm (ambient)

**Analyst Note:** SecurityGuard<sup>™</sup> Guard Cartridge System extends column lifetime.

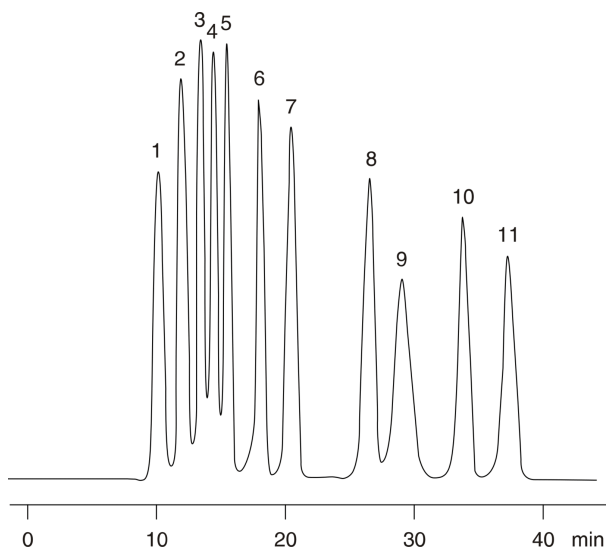
- SecurityGuard Cartridges, Carbo-Pb 4 x 3.0mm, 10/Pk Part No.: AJ0-4492
- Holder Part No.: KJ0-4282

**REZEX**<sup>™</sup>  
HPLC COLUMNS for Carbohydrates, Oligosaccharides, and Organic Acid Analysis



Products used in this application:

**REZEX**<sup>™</sup>



## Saccharides

### ANALYTES:

- 1 Stachyose
- 2 Maltose
- 3 Glucose
- 4 Xylose
- 5 Galactose
- 6 Fructose
- 7 meso-Erythritol
- 8 Mannitol
- 9 Salicin
- 10 Xylitol
- 11 Sorbitol

