

# HPLC Application

ID No.: 5510

## Carbohydrates

**Column:** Rezex<sup>™</sup> RNM-Carbohydrate Na+ (8%), LC Column 300 x 7.8 mm, Ea

**Dimensions:** 300 x 7.8 mm ID

**Order No:** 00H-0136-K0

**Elution Type:** Isocratic

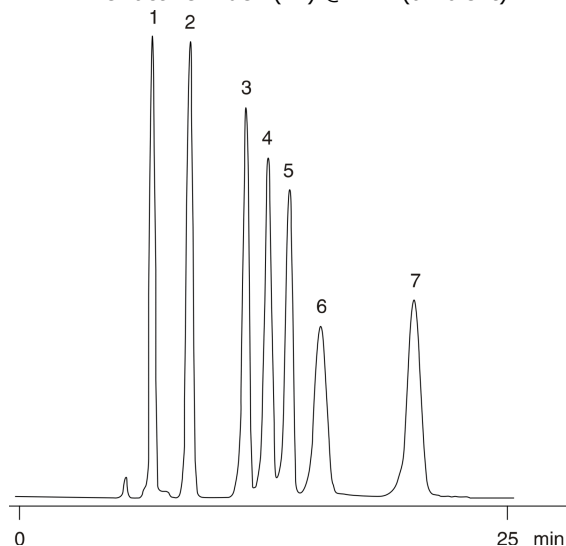
**Eluent A:** Water

Gradient	Step No.	Time (min)	Pct A
Profile:	1	0	100

**Flow Rate:** 0.6 mL/min

**Col. Temp.:** 75 °C

**Detection:** Refractive Index (RI) @ nm (ambient)



### ANALYTES:

- 1 Stachyose
- 2 Cellobiose
- 3 Glucose
- 4 Fructose
- 5 Arabinose
- 6 Ribose
- 7 Salicin

**REZEX**<sup>™</sup>  
HPLC COLUMNS for Carbohydrates, Oligosaccharides, and Organic Acid Analysis



Products used in this application:

**REZEX**<sup>™</sup>

