

HPLC Application

ID No.: 5516

Mannitol and Sorbitol

Column: Rezex[™] RCU-USP Sugar Alcohols, LC Column 250 x 4 mm, Ea

Dimensions: 250 x 4 mm ID

Order No: 00G-0130-D0

Elution Type: Isocratic

Eluent A: Water

Gradient	Step No.	Time (min)	Pct A
Profile:	1	0	100

Flow Rate: 0.2 mL/min

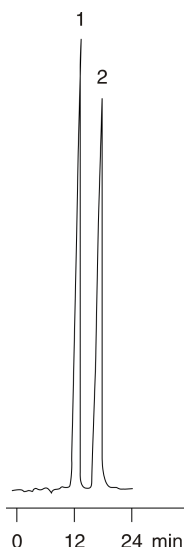
Col. Temp.: 85 °C

Detection: Refractive Index (RI) @ nm (ambient)

Analyst Note: SecurityGuard[™] Guard Cartridge System extends column lifetime.

- SecurityGuard Cartridges, Carbo-Ca 4 x 3.0mm, 10/Pk Part No.: AJ0-4493

- Holder Part No.: KJ0-4282



ANALYTES:

1 Mannitol

2 Sorbitol

REZEX[™]
HPLC COLUMNS for Carbohydrates, Oligosaccharides, and Organic Acid Analysis



Products used in this application:

REZEX[™]

