

HPLC Application

ID No.: 5518

Food Softeners

Column: Rezex[™] RCM-Monosaccharide Ca+2 (8%), LC Column 300 x 7.8 mm, Ea

Dimensions: 300 x 7.8 mm ID

Order No: 00H-0130-K0

Elution Type: Isocratic

Eluent A: Water

Gradient Profile:	Step No.	Time (min)	Pct A
	1	0	100

Flow Rate: 0.5 mL/min

Col. Temp.: 60 °C

Detection: Refractive Index (RI) @ nm (ambient)

Analyst Note: SecurityGuard[™] Guard Cartridge System extends column lifetime.

- SecurityGuard Cartridges, Carbo-Ca 4 x 3.0mm, 10/Pk Part No.: AJ0-4493

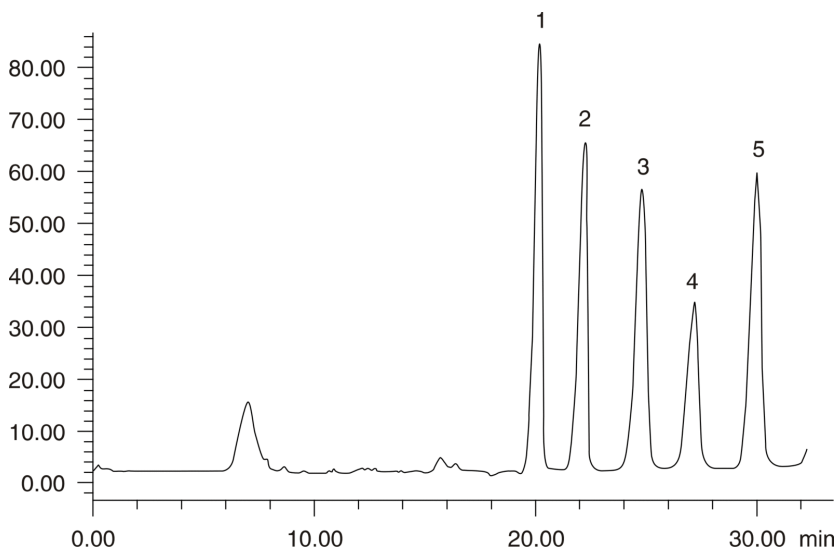
- Holder Part No.: KJ0-4282

REZEX[™]
HPLC COLUMNS for Carbohydrates, Oligosaccharides, and Organic Acid Analysis



Products used in this application:

REZEX[™]



ANALYTES:

- 1 Glycerol
- 2 Methoxypolyethylene glycol
- 3 Triethylene glycol
- 4 Sorbitol
- 5 Urea

