

HPLC Application

ID No.: 6523

Sugars in Honey on Rezex ROA

Column: Rezex[™] ROA-Organic Acid H+ (8%), LC Column 300 x 7.8 mm, Ea

Dimensions: 300 x 7.8 mm ID

Order No: 00H-0138-K0

Elution Type: Isocratic

Eluent A: 0.01 N H₂SO₄

Gradient Profile:	Step No.	Time (min)	Pct A
	1	0	100

Flow Rate: 1 mL/min

Col. Temp.: ambient

Detection: Refractive Index (RI) @ nm (ambient)

Analyst Note: Standard solution (A) vs. Honey sample (B)

SecurityGuard[™] Guard Cartridge System extends column lifetime.

- SecurityGuard Cartridges, Carbo-H 4 x 3.0mm, 10/Pk Part No.: AJ0-4490

- Holder Part No.: KJ0-4282

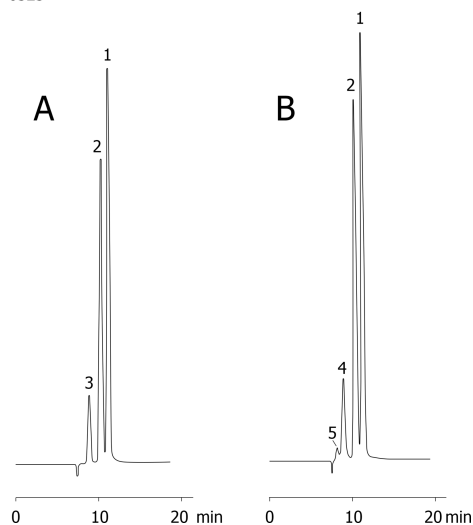
REZEX[™]
HPLC COLUMNS for Carbohydrates, Oligosaccharides, and Organic Acid Analysis



Products used in this application:

REZEX[™]

6523



ANALYTES:

- 1 Fructose
- 2 Glucose
- 3 Sucrose
- 4 Disaccharide
- 5 Trisaccharide

