

# HPLC Application

ID No.: 8716

## Cytochrome C Tryptic Digest Map

**Column:** Jupiter<sup>®</sup> 5  $\mu$ m C18 300  $\text{\AA}$ , LC Column 250 x 4.6 mm, Ea

**Dimensions:** 250 x 4.6 mm ID

**Order No:** 00G-4053-E0

**Elution Type:** Gradient

**Eluent A:** 0.1% TFA in water

**Eluent B:** 0.08% TFA in acetonitrile

Gradient Profile:	Step No.	Time (min)	Pct A	Pct B
	1	0	95	5
	2	30	35	65

**Flow Rate:** 1 mL/min

**Col. Temp.:** ambient

**Detection:** UV-Vis Abs.-Variable Wave.(UV) @ 215 nm (ambient)

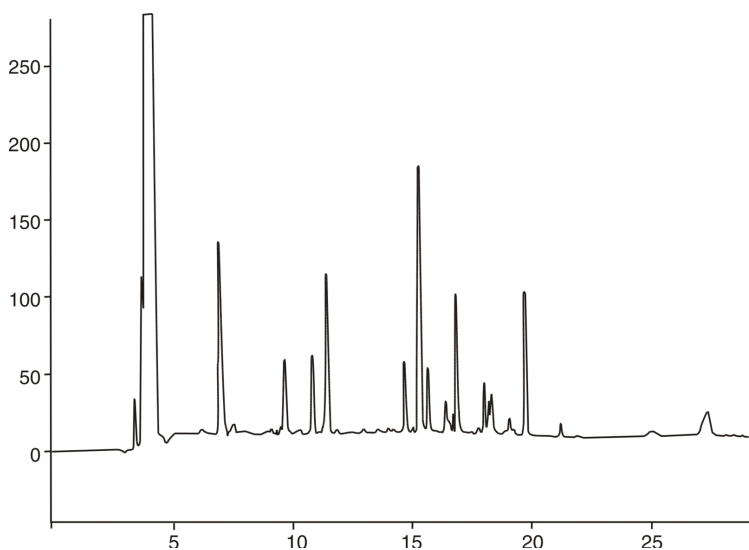
**Analyst Note:** SecurityGuard<sup>™</sup> Guard Cartridge System extends column lifetime.

- SecurityGuard Cartridges, Widedpore C18 4 x 3.0mm, 10/Pk Part No.: AJ0-4321

- Holder Part No.: KJ0-4282



Products used in this application:



### ANALYTES:

1 Cytochrome c

