

# HPLC Application

ID No.: 8722

## Proteins

**Column:** Jupiter<sup>®</sup> 5 µm C5 300 Å, LC Column 250 x 4.6 mm, Ea

**Dimensions:** 250 x 4.6 mm ID

**Order No:** 00G-4052-E0

**Elution Type:** Gradient

**Eluent A:** 0.1% TFA in water

**Eluent B:** 0.1% TFA in acetonitrile

Gradient Profile:	Step No.	Time (min)	Pct A	Pct B
	1	0	90	10
	2	5	60	40

**Flow Rate:** 1 mL/min

**Col. Temp.:** ambient

**Detection:** UV-Vis Abs.-Variable Wave.(UV) @ 220 nm (ambient)

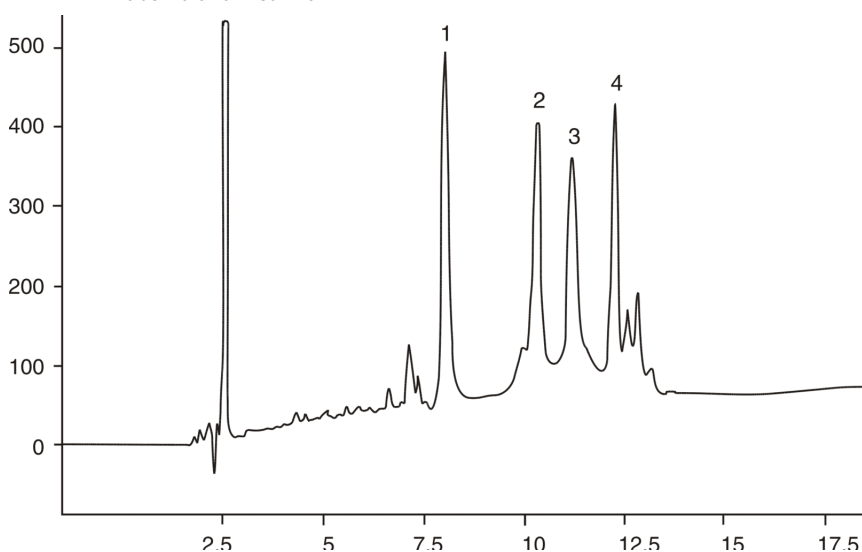
**Analyst Note:** SecurityGuard<sup>™</sup> Guard Cartridge System extends column lifetime.

- SecurityGuard Cartridges, Widedpore C5 4 x 3.0mm, 10/Pk Part No.: AJ0-4327

- Holder Part No.: KJ0-4282



Products used in this application:



## ANALYTES:

- 1 Bovine Serum Albumin (BSA)
- 2 Peroxidase
- 3 Catalase
- 4 Carbonic anhydrase

