

HPLC Application

ID No.: 9230

Doxepin HCl - USP Method

Column: Luna® 5 µm C8(2) 100 Å, LC Column 125 x 4.6 mm, Ea

Dimensions: 125 x 4.6 mm ID

Order No: 00E-4249-E0

Elution Type: Isocratic

Eluent A: 61:39 200mM Monobasic Sodium Phosphate:Methanol, adjusted to pH 2.5

| Gradient Profile: | Step No. | Time (min) | Pct A |
|-------------------|----------|------------|-------|
| | 1 | 0 | 100 |

Flow Rate: 1 mL/min

Col. Temp.: 50 °C

Detection: UV-Vis Abs.-Variable Wave.(UV) @ 254 nm (ambient)

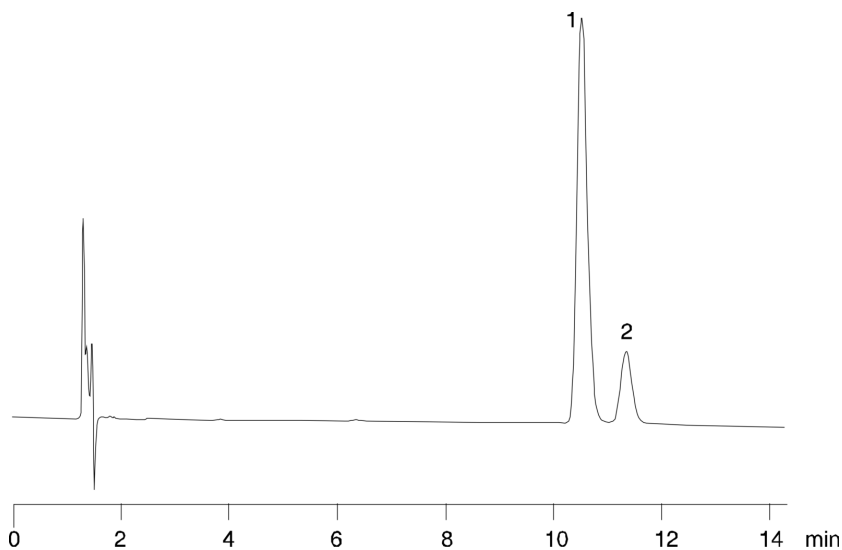
Analyst Note: SecurityGuard™ Guard Cartridge System extends column lifetime.

- SecurityGuard Cartridges, C8 4 x 3.0mm, 10/Pk Part No.: AJ0-4290

- Holder Part No.: KJ0-4282



Products used in this application:



ANALYTES:

1 Doxepin

2 Doxepin

